



# About Us

**SOLIN S.A.** is a Greek production company that produces composite and plastic pipes as well as fittings of a wide range of applications. It's one of the oldest companies of its kind and the only one with such a large range of pipe production for heating and sanitation. Primary and integral presupposition of its existence, since its establishment until today, is the quality of its products.

The well trained staff of the company consisting of 80 employees, works daily for covering the philosophy of the company that is "total customers satisfaction". The head office, the management and some warehouses are located in Athens, while the factory with the main warehouses are located in A' Industrial Area of Volos with buildings of 17.500m<sup>2</sup>, in a total plot extent of about 33.000m<sup>2</sup>.

In a course of more than 35 years of the manufacturing process and having the experience and knowledge of experts in this field, our products are among the top quality of their kind in the international markets and provide practical, reliable and enduring solutions to multiple applications.



More than 35  
Active years



Of our production  
in exports



ISO certificate  
since 2000

Exports to  
40 countries  
worldwide



Certifications from  
international institutes



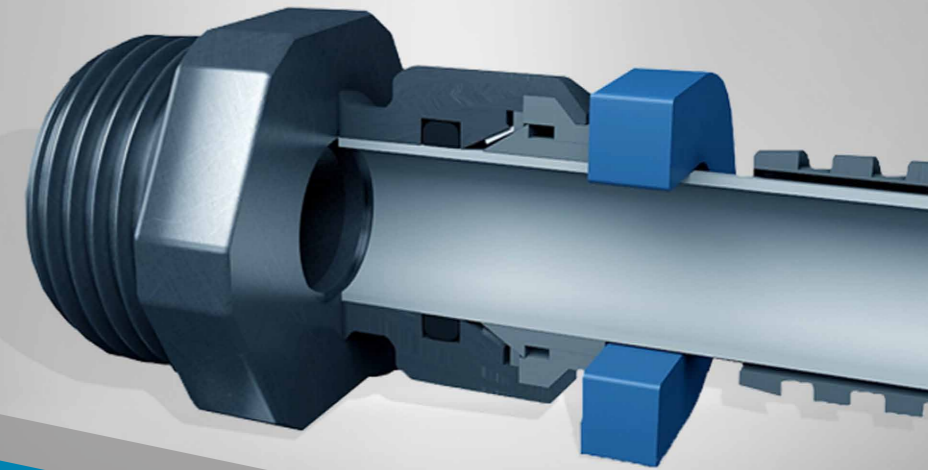
**HEADQUARTERS** : 12 Souliou Str | N.Chalkidona, 14343, Athens, Greece | T : +30 210 2531990 , +30 210 2523636 , +30 210 2531585

**FACTORY** : A' Industrial Area of Volos | 38500, Volos, Greece | T : +30 24210 95402, +30 24210 95421

[www.solin.gr](http://www.solin.gr) | [secretary@solin.gr](mailto:secretary@solin.gr)



## SYSTEM FOR HOT AND COLD WATER SUPPLY



# SANIFLEX®



## TECHNICAL INFORMATION

The unique connection system of bathroom for cold and hot water supply, **SANIFLEX**, consists of a chrome plated speed fit, which in combination with PEX-b pipes of special dimension (Ø10x1,4), it replaces the flexible pipes that connect hot-cold water in bathrooms.

This system offers easy stock, durability, speed installation and good aesthetics since the pipes are covered with outside corrugated pipe of white, gold and silver color. The speed fits are available in dimensions 3/8", 1/2" and 3/4" with male or female thread.

SANIFLEX plastic pipes, are made from high standard cross-linked polyethylene and are suitable to transfer hot water up to 95°C under pressure. For the above uses, saniflex pipes are certified from the German institutes SKZ (certificate of resistance to high temperatures and pressures) as well as from the English WRAS for their suitability in drinking water networks.



### CONTROL TEST

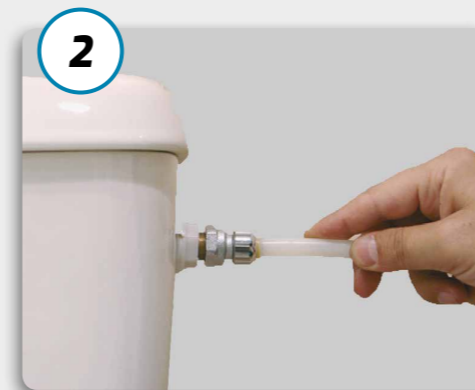
(for quality certification)	SPECIFICATIONS	REQUIREMENTS	COMMENTS
Hydrostatic pressure	EN ISO 15875-5 Paragraph.4.2	12,5 bar-95°C for 1000h	✓
Rotation temperature	EN ISO 15875-5 Paragraph.4.5	10 bar with rotation-95°C/20°C per 15min for 5000 circles	✓
Rotation pressure	EN ISO 15875-5 Paragraph.4.6	23°C with rotation 0,5bar/15bar per 2sec for 10000 circles	✓



## INSTALLATION INSTRUCTIONS



We screw one speed fit in the angle valve that supplies the water and the second speed fit to the water tank of basin



We push the pipe into the speed fit of the angle valve, until we hear the characteristic click of the termination.



We measure the required length of pipe till the second speed fit and after we cut the pipe, we also cut an equal length of corrugated pipe.

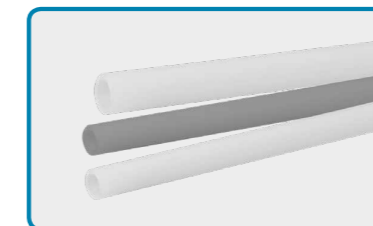


«We wear» the corrugated pipe to the inner pipe and we push it on the side of the angle valve, in order to have a sufficient length of inner pipe so to push it through the speed fit until the characteristic click of the termination is heard.

### Useful information for secure and quick installation

- ▶ In order the speed fit to connect right with the plastic pipe, we have to press and penetrate the plastic pipe in to the speed fit, until we hear the characteristic click of the termination.
- ▶ In the speed fit with female thread, be sure that there is a rubber sealing flange, there is no need for Teflon or other sealing, liquid or tape.
- ▶ The speed fit can be easily screwed by hand but in order to be more secured we can use a key to finish screwing.
- ▶ The plastic pipe must be cut perpendicular to the axis with the special cutter.
- ▶ Do not store the plastic pipe (inner and corrugated) under UV radiation.

## WHOLESALE PACKING



### PIPES

PIPE VPES Ø10 x 1,4 (WHITE)  
PIPE PBS Ø8 x 1 (GREY)  
PIPE DOWLEX5 Ø8 x 1 (WHITE)



### CORRUGATED PIPES

CORRUGATED PIPE Ø16(10) WHITE  
CORRUGATED PIPE Ø16(10) SILVER OR GOLD



### PLASTIC ACCESSORIES

PLASTIC DISCONNECTOR OF SPEED FIT



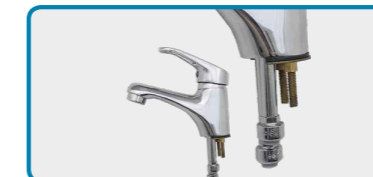
### SPEED FITS

SPEED FIT Ø10 x 1/2" (F) CHROME PLATED  
SPEED FIT Ø10 x 3/8" (F) CHROME PLATED  
SPEED FIT Ø10 x 3/4" (F) CHROME PLATED  
SPEED FIT Ø10 x 1/2" (M) CHROME PLATED



### SPEED FITS

ANGLE SPEED FIT FOR WASHING MACHINE Ø10 x 3/4" (F) (WITH FREE NUT) CHROME PLATED



### SPEED FIT SET

SPEED FIT SET FOR BATHROOM FAUCET Ø8 x M10



### SPEED FITS

SPEED FIT Ø8 x 1/2" (F) CHROME PLATED  
SPEED FIT Ø8 x 3/8" (F) CHROME PLATED  
SPEED FIT Ø8 x 3/4" (F) CHROME PLATED  
SPEED FIT Ø8 x 1/2" (M) CHROME PLATED



### RETAIL PACKING

SANIFLEX SET WITH SPEED FIT 3/8" (F)  
SANIFLEX SET WITH SPEED FIT 1/2" (F)  
SANIFLEX SET WITH SPEED FIT 3/4" (M)

**EACH PACKAGE INCLUDES:** 3m Ø10 pipe, 3m corrugated pipe, 10 speed fits, 1 disconnecter